

ALDH2 Antibody (Center)
Affinity Purified Rabbit Polyclonal Antibody (Pab)
Catalog # AP1432c**Specification**

ALDH2 Antibody (Center) - Product Information

Application	WB, IHC-P,E
Primary Accession	P05091
Other Accession	P11884 , P47738
Reactivity	Human
Predicted	Mouse, Rat
Host	Rabbit
Clonality	Polyclonal
Isotype	Rabbit IgG
Calculated MW	56381
Antigen Region	318-347

ALDH2 Antibody (Center) - Additional Information**Gene ID** 217**Other Names**

Aldehyde dehydrogenase, mitochondrial, ALDH class 2, ALDH-E2, ALDH1, ALDH2, ALDM

Target/Specificity

This ALDH2 antibody is generated from rabbits immunized with a KLH conjugated synthetic peptide between 318-347 amino acids from the Central region of human ALDH2.

Dilution

WB~~1:2000

IHC-P~~1:10~50

E~~Use at an assay dependent concentration.

Format

Purified polyclonal antibody supplied in PBS with 0.09% (W/V) sodium azide. This antibody is purified through a protein A column, followed by peptide affinity purification.

Storage

Maintain refrigerated at 2-8°C for up to 2 weeks. For long term storage store at -20°C in small aliquots to prevent freeze-thaw cycles.

Precautions

ALDH2 Antibody (Center) is for research use only and not for use in diagnostic or therapeutic procedures.

ALDH2 Antibody (Center) - Protein Information**Name** ALDH2

Synonyms ALDM

Function Required for clearance of cellular formaldehyde, a cytotoxic and carcinogenic metabolite that induces DNA damage.

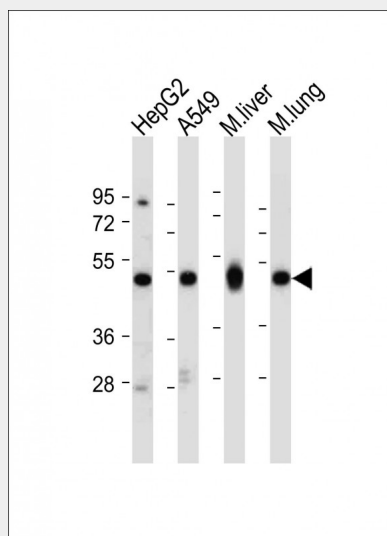
Cellular Location

Mitochondrion matrix.

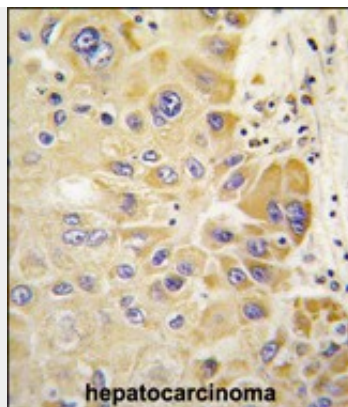
ALDH2 Antibody (Center) - Protocols

Provided below are standard protocols that you may find useful for product applications.

- [Western Blot](#)
- [Blocking Peptides](#)
- [Dot Blot](#)
- [Immunohistochemistry](#)
- [Immunofluorescence](#)
- [Immunoprecipitation](#)
- [Flow Cytometry](#)
- [Cell Culture](#)

ALDH2 Antibody (Center) - Images

All lanes : Anti-ALDH2 Antibody (Center) at 1:2000 dilution Lane 1: HepG2 whole cell lysate Lane 2: A549 whole cell lysate Lane 3: Mouse liver tissue lysate Lane 4: Mouse lung tissue lysate Lysates/proteins at 20 µg per lane. Secondary Goat Anti-Rabbit IgG, (H+L), Peroxidase conjugated at 1/10000 dilution. Predicted band size : 56 kDa Blocking/Dilution buffer: 5% NFDM/TBST.



Formalin-fixed and paraffin-embedded human hepatocarcinoma tissue reacted with ALDH2 antibody (Center) (Cat.#AP1432c), which was peroxidase-conjugated to the secondary antibody, followed by DAB staining. This data demonstrates the use of this antibody for immunohistochemistry; clinical relevance has not been evaluated.

ALDH2 Antibody (Center) - Background

ALDH2 belongs to the aldehyde dehydrogenase family of proteins. Aldehyde dehydrogenase is the second enzyme of the major oxidative pathway of alcohol metabolism. Two major liver isoforms of this enzyme, cytosolic and mitochondrial, can be distinguished by their electrophoretic mobilities, kinetic properties, and subcellular localizations. Most Caucasians have two major isozymes, while approximately 50% of Asians have only the cytosolic isozyme, missing the mitochondrial isozyme. A remarkably higher frequency of acute alcohol intoxication among Asians than among Caucasians could be related to the absence of the mitochondrial isozyme.

ALDH2 Antibody (Center) - References

Guo,Y.M., World J. Gastroenterol. 14 (9), 1444-1449 (2008)
Chen,L., PLoS Med. 5 (3), E52 (2008)
Teeguarden,J.G., Inhal Toxicol 20 (4), 375-390 (2008)
Yoshida,A., Pharmacogenetics 2 (4), 139-147 (1992)